

## TRANSPORT CONTAINER F-35

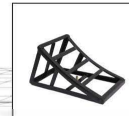
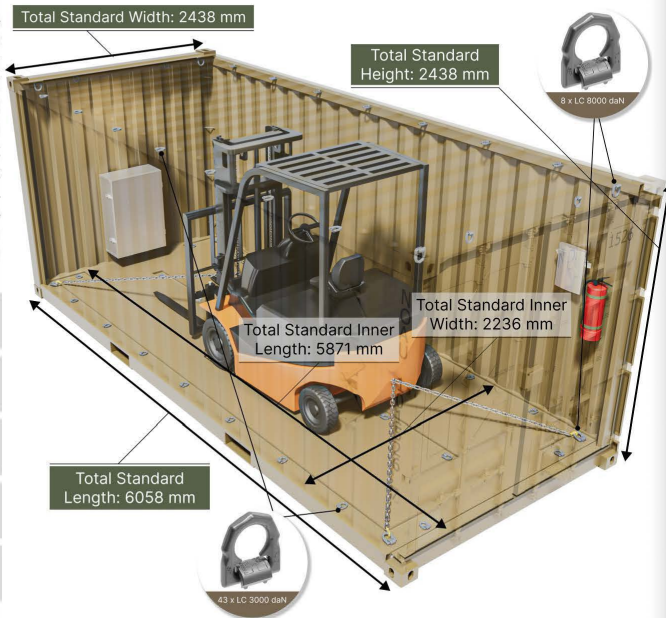
The F-35 transport container is a robust and standardized solution designed for demanding civil and military operations. Certified as a CSC-compliant 1C unit in accordance with ISO 668 and ISO 1496-1, it delivers strength, flexibility, and reliable performance for the safe transportation and storage of mission-critical equipment, including forklift trucks, in all environments. With its reinforced steel structure, optimized interior, and compliance with international standards, the F-35 ensures outstanding protection, smooth handling, and compatibility with global transport systems.



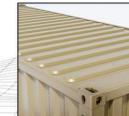
### SPECIFICATIONS

The F-35 transport container is constructed in accordance with CSC and ISO standards, ensuring a strong and durable steel frame built for heavy-duty use. With external dimensions of 6058 x 2438 x 2438 mm and an internal capacity of 5871 x 2236 x 2591 mm, it offers optimized space for secure transport of vehicles, equipment, and mission systems. The tare weight of approximately 2570 kg combined with a maximum gross weight of 24,000 kg provides reliable capacity for demanding operations. Multiple anchor points rated LC 3000-8000 daN enable safe fastening of cargo, while forklift compatibility and reinforced handling points support efficient loading and unloading.

	<b>STANDARD DIMENSIONS:</b> 6058 X 2438 X 2438 MM		<b>INNER DIMENSIONS:</b> 5871 X 2236 X 2236 MM
	<b>ANCHOR POINTS:</b> LC 3000 - 8000 daN		<b>EXT. COLOR - RAL1039</b> <b>INT. COLOR - RAL1013</b>
	<b>STORAGE FOR LASHING EQUIPMENT</b>		<b>FORKLIFT COMPATIBLE</b>
	<b>NET TARE WEIGHT:</b> 2570 KG		<b>MAX GROSS WEIGHT:</b> 24000 KG
	<b>ISO STANDARDS COMPLIANCE</b>		<b>CSC CERTIFICATION</b>



Heavy Duty Vehicle Wheel Chock



Roof Anti-Slip Coating



Plywood Floor Cover 28mm

### OPTIONS

The F-35 transport container can be delivered with a range of optional features designed to enhance safety, functionality, and handling. These include additional lashing points up to 8000 daN, heavy-duty wheel chocks, self-locking hooks, reinforced plywood floor cover (28 mm), roof anti-slip coating, dry air coupling, and dedicated storage for lashing equipment.



Dry Air Coupling



Anchor Points  
3000 & 8000 daN



Self-Locking Hook

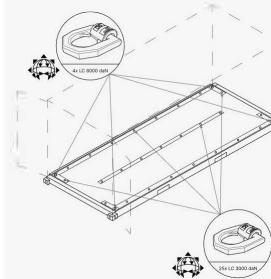


Storage for Lashing Equipment

### ANCHOR POINTS VIEW

#### FLOOR VIEW ANCHOR POINTS

Symbol	LC daN	MBL	KG	Amount
①	8000 daN	TBD	8000	4
②	3000 daN	TBD	3000	25



#### CEILING VIEW ANCHOR POINTS

Symbol	LC daN	MBL	KG	Amount
①	8000 daN	TBD	8000	4
②	3000 daN	TBD	3000	18

